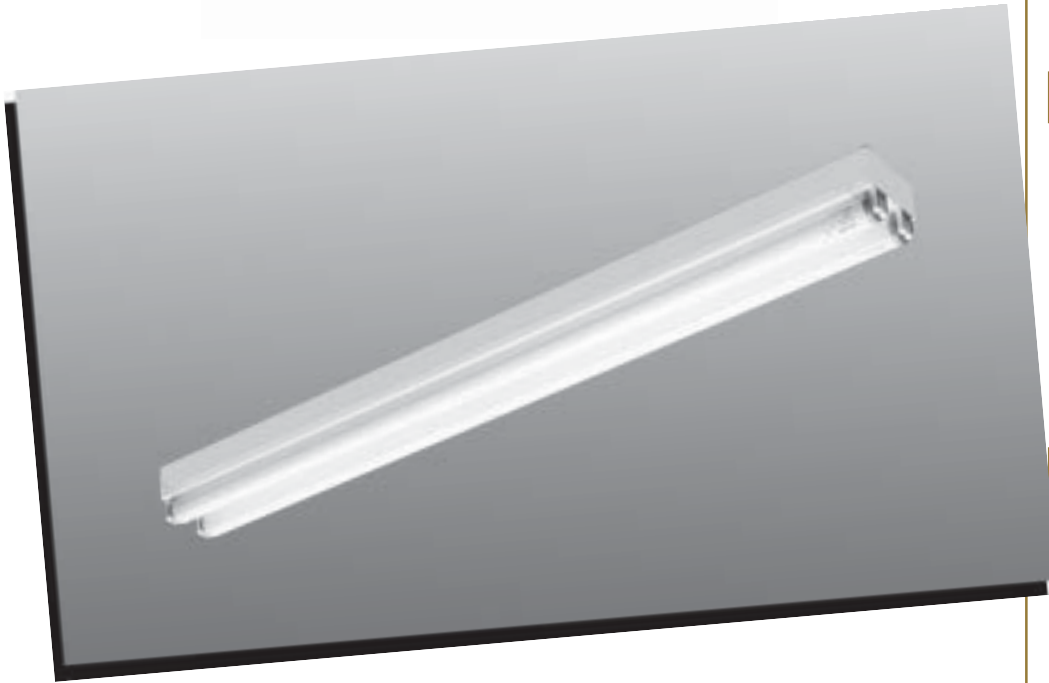


# WISMARQ



## WLCS SERIES

### Channel-Mate

#### APPLICATION

- All purpose, heavy-duty open channel fixture. Dependable, economical lighting for industrial, retail and architectural application.
- Flexible range of lamp styles and channel lengths, 2, 3, 4, 6 and 8 foot sizes, 16 foot tandem units.
- Can be surface, chain or pendant mounted individually or in continuous rows.




#### CONSTRUCTION

- Die-formed code gauge cold rolled steel housing for strength and uniformity. Snap-on ballast cover secured with spring clips, allowing no-tool access for wiring and maintenance. Knockouts on housing top and ends for mounting and electrical connections.
- Accessories include: asymmetric and symmetric reflectors as well as wire guards.
- Optional quick-connect wiring system for continuous row installation. Optional extended end plates for socket protection.

#### FINISH

- All metal parts pretreated with a phosphate bonding process and post painted with an electrostatically-applied high temperature baked enamel for superior quality and durability. White surfaces have reflectance in excess of 89%.

#### ELECTRICAL

- Energy-saving and electronic Class P, CBM/ETL certified, HPF ballasts comply with Federal Energy Efficiency Standards. 
-  U.L. listed and  listed.
- I.B.E.W. labeled.

**Wismarq Light Company, Inc.**

6679 N. Industrial Road

Milwaukee, WI 53223 414-353-1233 \* Fax 414-353-4114

